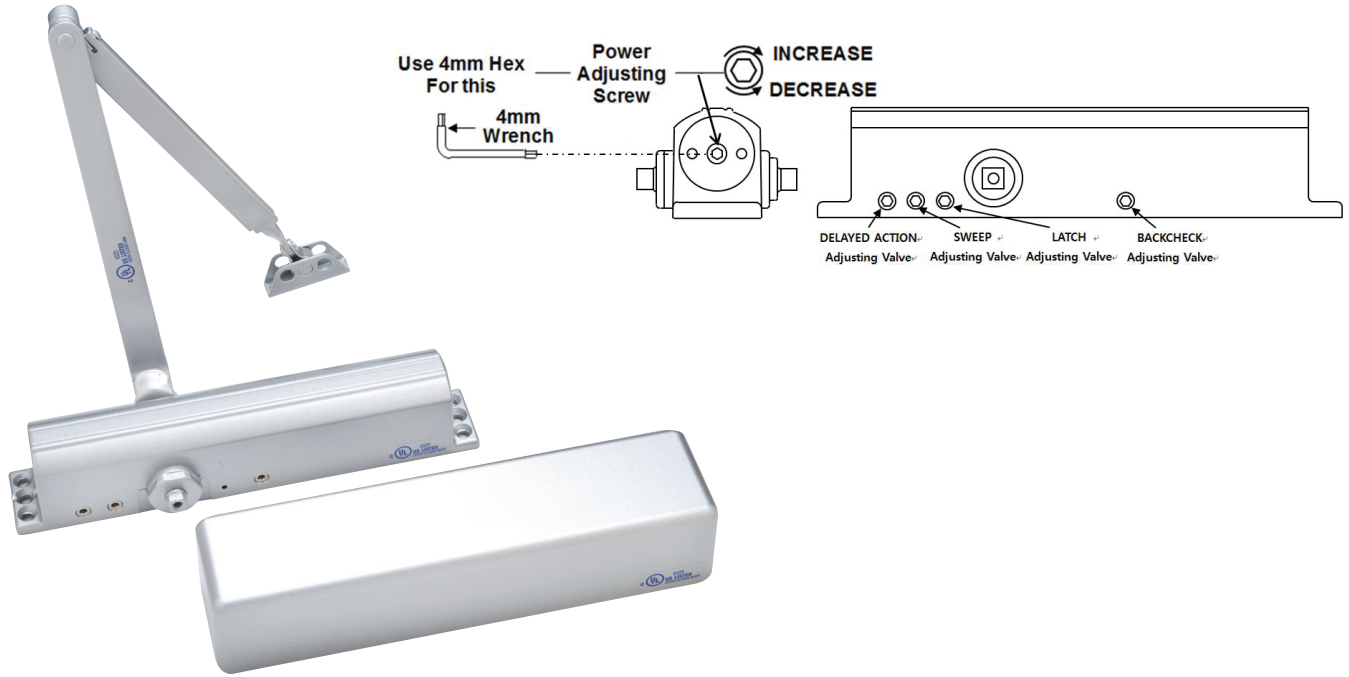


Doormerica

DC70 / DC70BF - Heavy Duty Commercial Door Closer



Features:

- Tri-Pack with regular, parallel and top-jamb mounting, instructions and full size template.
- Standard spring adjustment from size 1 to 6
- Non handed
- Standard with adjustable sweep, latch and back check.
- Full plastic cover
- SNB -Sex Nuts and Bolts
- Standard hole pattern and mounting location.
- Limited Lifetime Warranty
- 6 closers per shipping carton

Options:

- BF: Barrier free spring adjustment from size BF-4.
- CUSH: Heavy Duty Parallel Mount Cush Arm.
- DA: Delay Closing Action.
- H: Friction Hold Open Non-Handed Arm.
- HCUSH: Hold Open Parallel Mount Cush Arm.

CAUTION: Door closer for Low Opening Force Applications:
Door closers installed in openings required to meet the requirements of The Americans with Disabilities Act or ANSI/BHMA Standard A117.1, when adjusted to meet those requirements, may not provide adequate closing power to dependably close and latch the door.



CODE COMPLIANCE:

- ANSI A 156.4 Grade 1. UL 1 OC and UBC 7.2 for positive pressure.
- ANSIA 117.1 and ADA for barrier-free accessibility C-UBC -California Amended Uniform Builders Code -2001
- California State Fire Marshall (CSFM) approved

LIMITED LIFETIME WARRANTY

Stocked Product

Item	Finish
DC70 Regular Arm:	Aluminum, Duro, Gold, US3, US26
BF Spring option:	Aluminum, Duro, Gold
Cush Arm:	Aluminum, Duro
Delayed Action:	Aluminum, Duro
H Cush:	Aluminum, Duro
Hold Open	Aluminum, Duro, Gold