

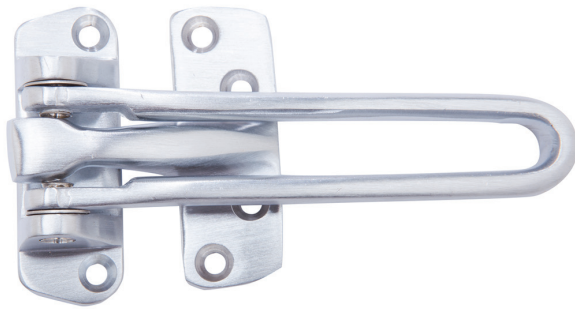
# Doormerica

## Door Guards

### DDL - Privacy Latch

#### Features:

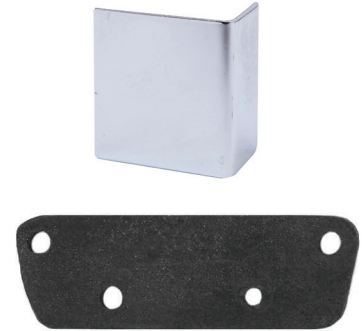
- Easy to operate
- ADA Compliant
- Meets NFPA 80 5.2.13.3



### DG128BR

#### Features:

- Solid forged brass.
- Positive projection lock ball not allowing forced entry.
- Swing bar folds out of place when not used.
- Maximum 4" door opening when engaged.
- Cannot be disengaged unless door is fully closed.



#### Options:

- DGDEP128 - Door Angle Protector
- DGS128 - Door Guard Shim

### Stocked Product

Item	Finish
DDL	10B,US15,26D
DG128BR	US3,10B,15,26,26D
DGDEP128	10B,15,26,26D
DGS128	Black