

Doormerica

RL300 / RL320 - Roller Latches

Features:

- Actuation is simple, closing of the door causes the roller to fall in the depression of the strike, thereby holding the door closed.
- The projection of the roller is easily adjusted using adjusting screws on the face of the unit.
- Maximum projection of the roller is 3/8" allowing for variance in the door clearance.
- Nylon Roller Standard.
- Forged Brass Construction.
- Meets ANSI/BHMA A156.16, E19091.
- Finishes US10B, US26D other finishes available special order only

Dimensions:

Body: 1" Wide x 3-3/8" Long x 1-5/8" Deep

Strike: 1-11/16" Wide x 2-3/16" Long x 5/32" Thick



RL300

Stocked Product

Item	Finish
RL300	10B, 26D

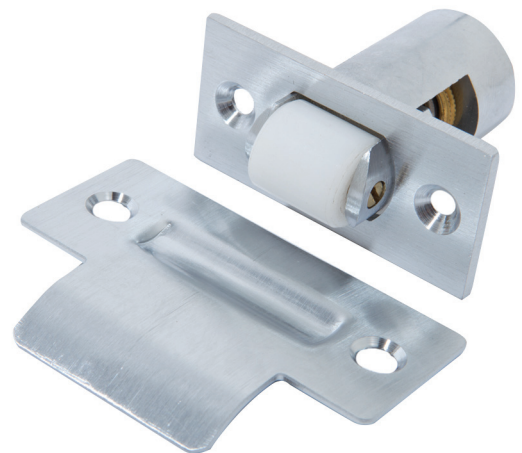
Features:

- Actuation is simple, closing of the door causes the roller to fall in the depression of the strike, thereby holding the door closed.
- The projection of the roller is easily adjusted by turning knurled knob on back of latch.
- Maximum projection of the roller is 1/2" allowing for variance in the door clearance.
- Fits heavy-duty cylindrical lock cutout.
- Nylon Roller Standard.
- Non-handed.
- Brass or Stainless Steel Construction.
- Meets ANSI/BHMA A156.16, E19101.
- Finishes US10B, US26D other finishes available special order only

Dimensions:

Body: 1-1/8" Wide x 2-1/4" Long x 1-3/4" Deep

Strike: 1-1/8" Wide x 2-3/4" Long x 1/16" Thick



RL320

Stocked Product

Item	Finish
RL320	26D