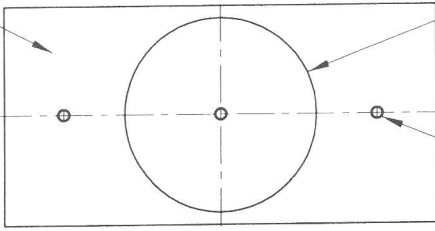


LHR / LH

DOOR EDGE

☞ of 1-3/4" (45mm) DOOR  
☞ of 1-3/8" (35mm) DOOR

THIS AREA TO BE 5/32" (4mm) DEEP



BORE 1" (25mm) DIA LATCH HOLE

#8-32 Combination Screw(2)

High Bevel

2-3/4" (70mm) BACKSET

High Bevel

Low Bevel

High Bevel

2-3/8" (60mm) BACKSET

High Bevel

Low Bevel

Low Bevel

Low Bevel

5/32" (4mm)

1/8" MIN,  
Depth notch  
both sides  
of door

2-1/8" (54mm) DIA

3/8" (9mm)  
(2 places)

7/8" (25mm) THRU HOLE

3/8" (9.5mm) DIA

2-15/32" (62.7mm)

2-3/4" (70mm)

4-7/16" (112mm)

5-9/32" (134mm)



High Bevel

2-3/8" (60mm) BACKSET

High Bevel

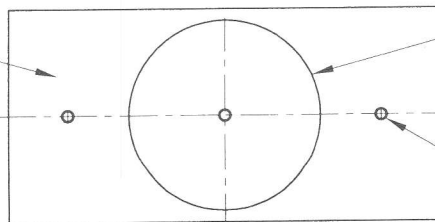
Low Bevel

High Bevel

2-3/4" (70mm) BACKSET

High Bevel

THIS AREA TO BE 5/32" (4mm) DEEP



BORE 1" (25mm) DIA LATCH HOLE

#8-32 Combination Screw(2)

☞ of 1-3/4" (45mm) DOOR  
☞ of 1-3/8" (35mm) DOOR

DOOR EDGE

RHR / RH