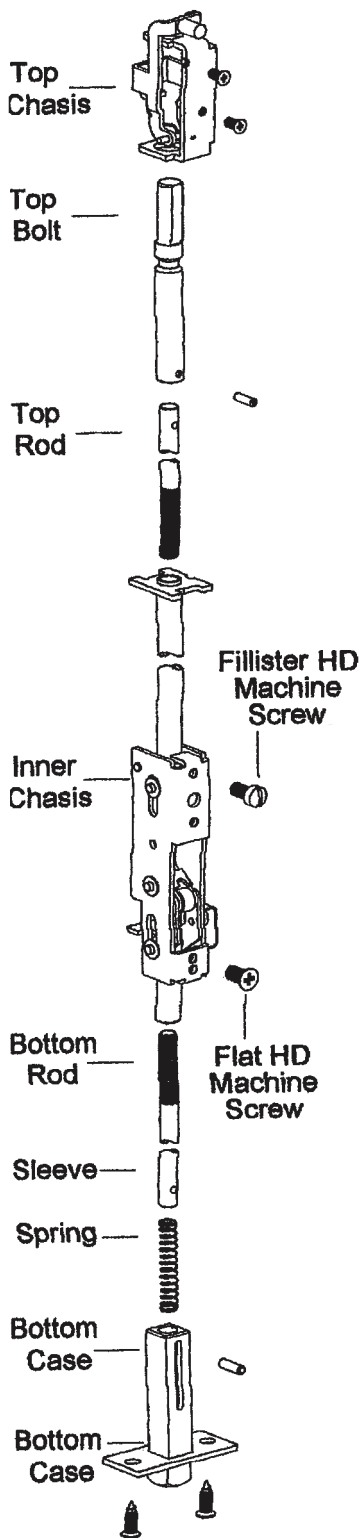


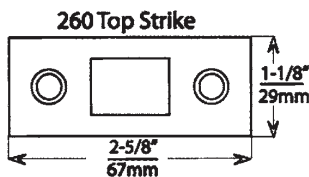
# Doormerica

## EDCVM701 / EDFCVM701 - Heavy Duty Concealed Vertical Rod Exit Device (for metal doors)

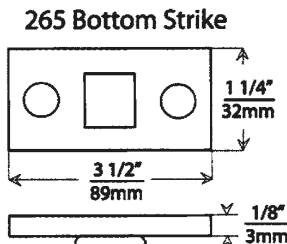


### Specifications:

- For Doors..... Metal. 13/4" (44.5mm) minimum thickness  
4 1/2" (114mm) minimum stile width
- Chassis..... Nonferrous alloy
- Chassis Cover..... Bronze or Stainless Steel
- Mounting..... Furnished standard with machine screws.
- End Cap..... Brass, Bronze or Stainless Steel Construction
- Handing..... Easily field reversible. Specify at time of order LHRB, RHRB for convenience.
- ANSI standard..... A156.3, Grade 1.
- Strike..... 260 top and 265 bottom.
- Top and bottom bolts- Stainless Steel. Top and bottom bolt travel 7/16" (11mm)  
Projection adjustable up to 1(25mm)
- Fire Exit hardware..... EDFCVM701 Series for fire Exit hardware for all types of 8'0" x 8'0"  
Double doors for up to 3 hour fire labeled installations, conforms to standards  
UL10C and UBC 7-2-1997 codes.
- Rail height ..... Specify door opening and mounting height of center line of rail ordering an  
vertical Rod Exit Device 41" from floor.
- Trim..... See trim Designs section
- Door size ..... 36" x 84"      36" x 96"  
48" x 84"      48" x 96"



- ◆ For applications metal frames
- ◆ Stainless Steel



- ◆ Furnished with expansion shields
- ◆ Mortised into floor
- ◆ Stainless Steel



### CODE COMPLIANCE:

- ANSI A 156.3 Grade 1. UL 1 OC and UBC 7.2 for positive pressure.
- ANSIA117.1 and ADA for barrier-free accessibility
- C-UBC -California Uniform Builders Code 2001
- NFPA-80 -National Fire Protection Association 1999
- NFPA101 National Fire Protection -Life Safety 2000

### LIFETIME WARRANTY

### Stocked Product

Item	Finish
EDCVM701	10B, 32D
36" x 84", 48" x 84", 36" x 96", 48" x 96"	
EDFCVM701	10B, 32D
36" x 84", 48" x 84", 36" x 96", 48" x 96"	