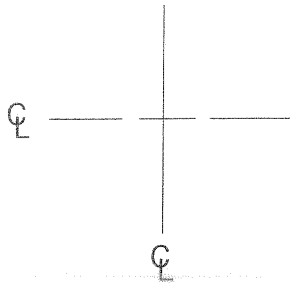
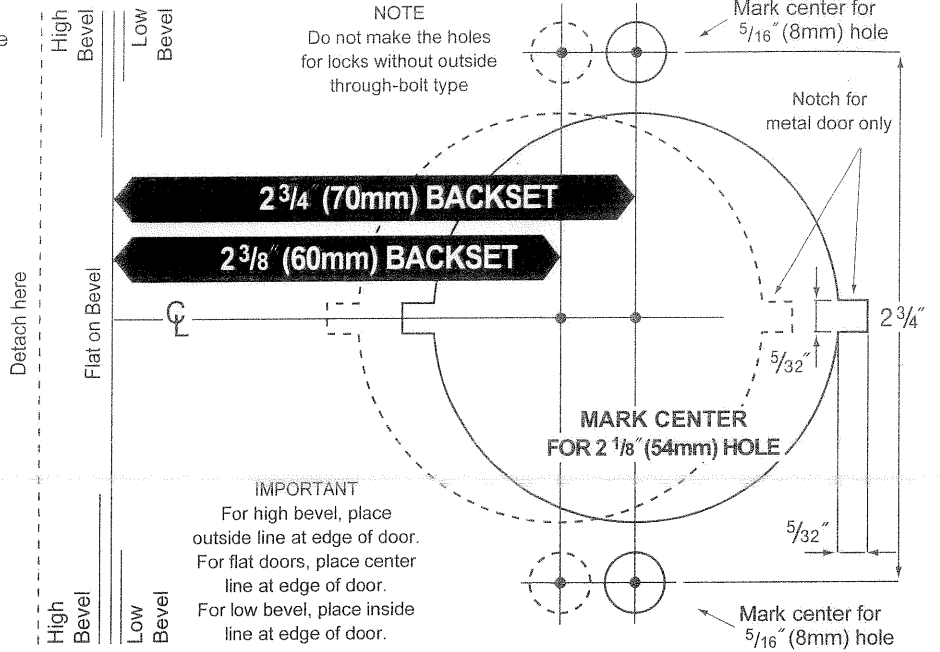


Mark center of door thickness for 1" (25mm) hole



**INSTALLATION  
TEMPLATE**

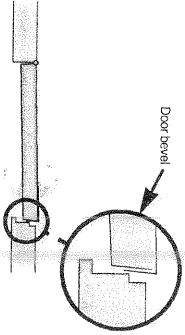
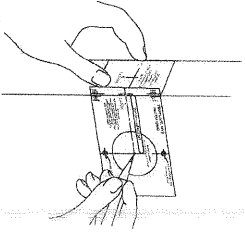


## Instructions For Installing Heavy Duty Lever Lockset

Screw Type Through-Bolts are provided and recommended for use on high frequency doors.

**NOTE :** Accurate door preparation is essential for proper functioning of this lock. Follow template and instructions carefully.

### Door and jamb preparation



### 1. Mark door

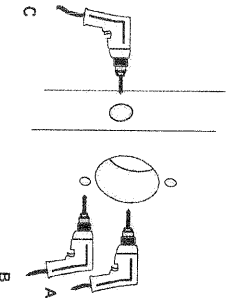
A. Check lock for proper basest before marking.

**NOTE :** Through-Bolts are provided and recommended for use on high frequency doors.

- B. Detach stub.
- C. Field template at correct marking for door bevel of door (right or low level, or flat)
- D. Position template at correct height (recommended height for centerline is 38" (97cm) from floor).
- E. Mark center for 2 1/8" (54mm) hole
- F. Also mark for 2 5/16" (65mm) holes for mounting screws.
- G. Use stub to mark center of door thickness.

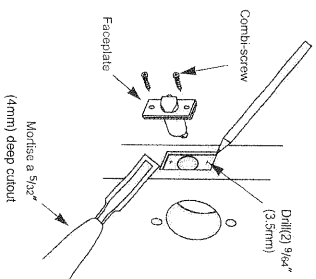
**HINT :** For retrofitting existing lock holes, field template in half to position for the mounting screw.

### 2. Drill holes



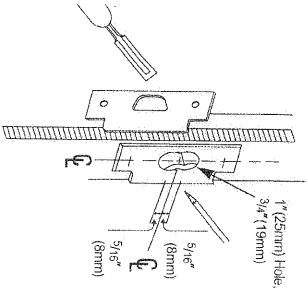
- A. Drill a 2 1/8" (54mm) hole through door (from both sides to avoid damaging door).
- B. Drill (2) 5/16" (8mm) holes for through-bolt
- NOTE :** Do not drill the (2) 5/16" (8mm) holes for locks No. through - bolt type
- C. Drill a 1" (25mm) hole in door edge.

### 3. Install latch



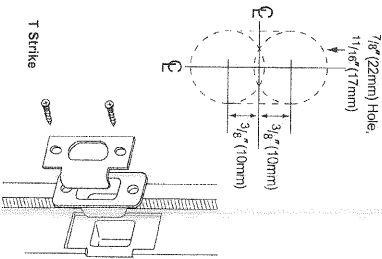
- A. Insert latch into hole. Trace around faceplate
- B. Chisel out wood until faceplate fits flat with door edge.
- C. Drill (2) 9/16" (13.5mm) holes and secure latch unit with combi-screws supplied.
- D. Fasten latch to door so that beveled side of latchbolt faces jamb.

### 4. Install strike



ASA Strike - Standard

- A. Mark vertical line and heightline on jamb exactly opposite center of latch hole.
- B. Drill (2) 1" (25mm) holes, 3/4" (19mm) deep, 5/16" (8mm) above and below heightline.
- C. Use strike plate to pattern for cutout. Clean out hole and install strike.

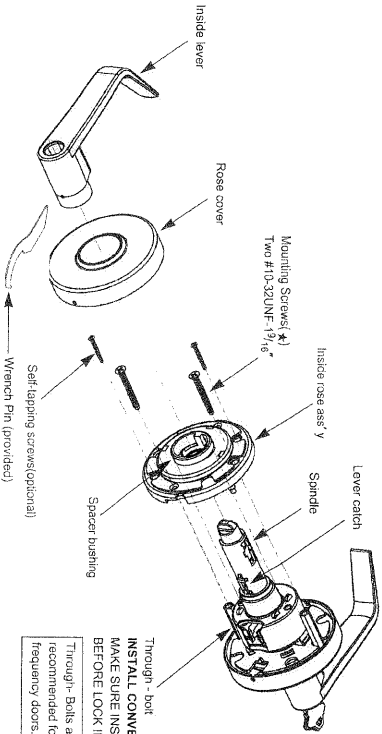


T Strike

- A. Mark vertical line and heightline on jamb exactly opposite center of latch hole.
- B. Drill (2) 7/8" (22mm) holes, 1 1/8" (17mm) deep, into doorjamb as shown.
- C. Mortise a cutout for the strike. Use strike as a pattern for the mortise. (Strike should fit flush with the doorjamb).

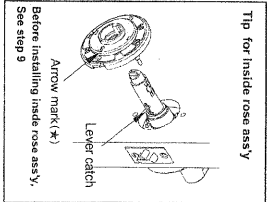
### Lock Installation

**NOTE :** Use Mounting screws (★) (two #10-32UNF-19 1/16" provided screws) in installing convertible thru bolt.



- A. Push to depress lever catch and remove lever.
- B. Rotate inside rose cover to remove cover and rose ass'y.
- C. Insert the convertible thru bolts(provided), if not pre-installed, into tapered holes in the outside rose ass'y.

### 5. Disassemble inside trim



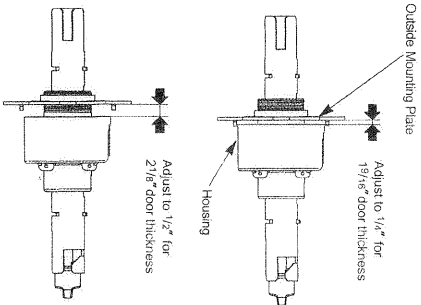
Tip for inside rose ass'y

Through - bolt  
INSTALL CONVERTIBLE THRU BOLTS  
MAKE SURE INSTALL THRU BOLTS  
BEFORE LOCK INSTALLATION

Through-Bolts are provided and recommended for use on high frequency doors.

## 6. Adjust for door thickness

### LOCKSET IS FACTORY PRESET FOR 1 3/4" (45mm) DOORS.

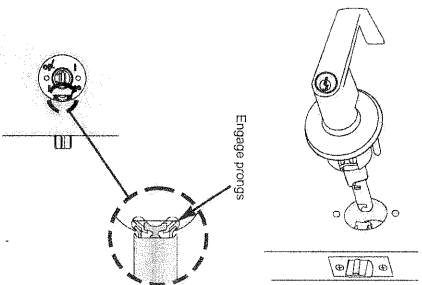


It can be adjusted for door thickness range from 1 9/16" up to 2 1/8". For adjustment of nonstandard door thickness, follow step 11, then:

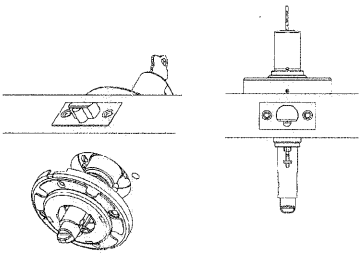
- Rotate outside rose plate for proper door thickness as shown left.
- Assemble outside rose assembly onto chassis while reassembling inner posts through holes in the plate.
- Insert spacer bushing and assemble outside lever by reversing procedure.

**NOTE:** See Step 11, must be done if you have to make adjustments for door thickness.

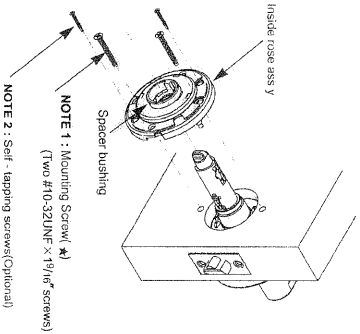
## 7. Install outside unit



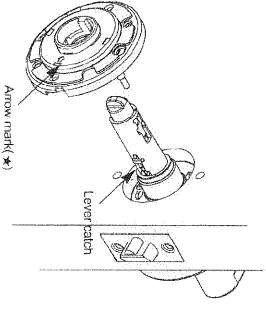
## 8. Install inside rose assembly



- Hold outside unit in place.
- Put inside rose assembly into position on chassis.
- Insert and tighten mounting screws (★) (two #10 - 32UNF x 1 9/16" screws provided).
- And may secure more with 2 self-tapping screws (provided) onto door surface at user discretion.
- Put on rose cover and rotate clockwise.

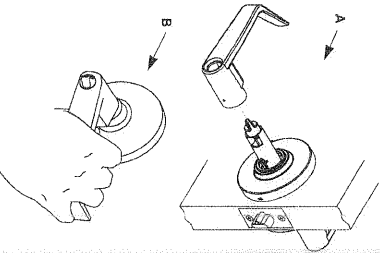


## 9. Tip for inside rose ass'y



- When putting inside rose assembly into position on chassis, it needs to align the direction of arrow mark (★) with lever catch.

## 10. Install inside lever

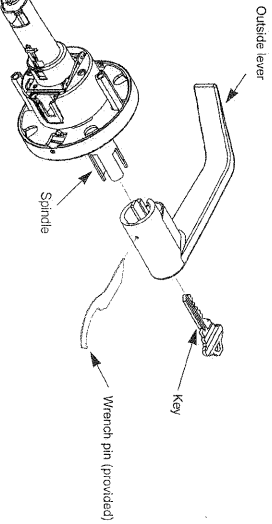


- Slide inside lever onto spindle. Push lever completely into place. (Pull on lever to make sure that catch is fully engaged.)
- Test operation of lock to make sure you have followed instructions correctly.

## How to remove & reassemble outside lever

### 11. Remove outside lever

**NOTE:** Required if you re-key the lock or adjust the door thickness. (See Step 6)

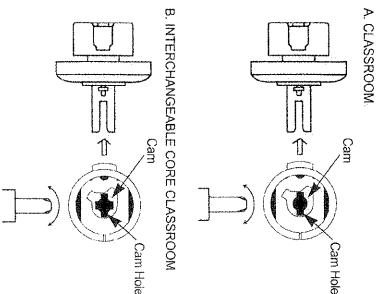


- Insert key into cylinder. Insert wrench pin (provided) into hole in lever. Turn key one-quarter turn and push pin to depress lever catch. Slide the lever from spindle.

## 12. Reassemble outside lever

- Reverse Step 11 to reassemble levers.
- To reassemble, put a cylinder and key in lever.
  - Push cylinder further in until it engages retractor.
  - Turn key 90° clockwise and hold a key.
  - Depress lever catch and push lever (Not key) in until it clicks then release a key.

## CAUTION FOR CLASSROOM FUNCTION



- Locking: Turn key 360 degree counter-clockwise.
  - Unlocking: Turn key 360 degree clockwise.
- ★ Make sure to turn cam counter clockwise with a screw driver as far as it will go before reassembling of cylinder to prevent mis-positioning of cam for classroom function.