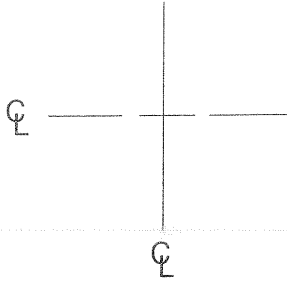
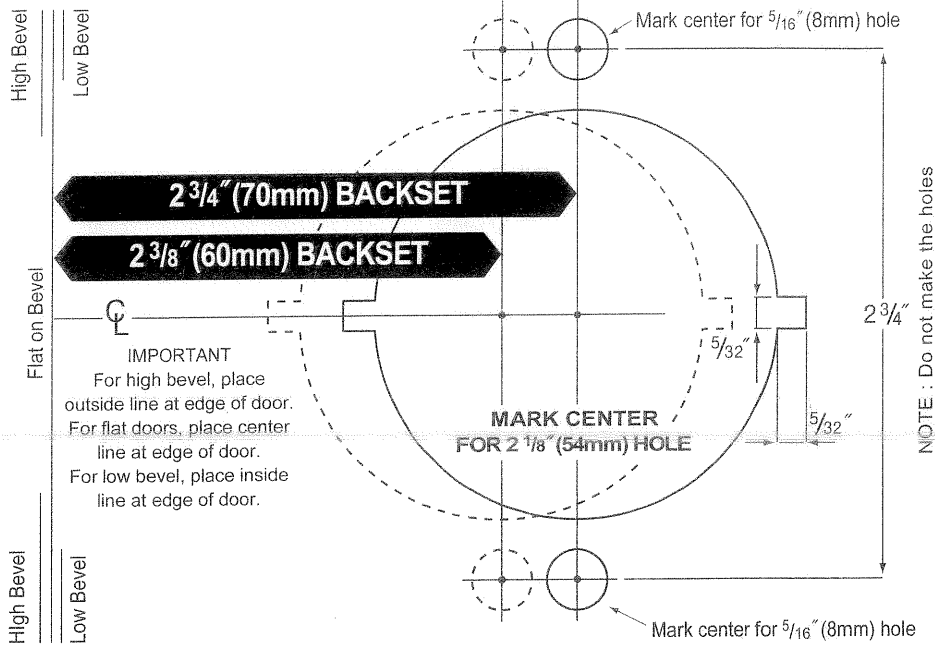


Mark center of door thickness for 1" (25mm) or 7/8" (22mm) hole, depending on latch housing diameter



**INSTALLATION  
TEMPLATE**

Detach here



**2 3/4" (70mm) BACKSET**

**2 3/8" (60mm) BACKSET**

**IMPORTANT**  
For high bevel, place outside line at edge of door.  
For flat doors, place center line at edge of door.  
For low bevel, place inside line at edge of door.

**MARK CENTER FOR 2 1/8" (54mm) HOLE**

Mark center for 5/16" (8mm) hole

Mark center for 5/16" (8mm) hole

**NOTE :** Do not make the holes for locks without outside through-bolt type

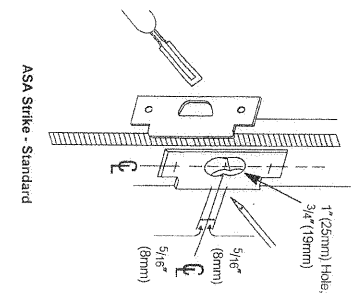
## Instructions For Installing Cylindrical Leverset

Screw Type Through-Bolts are provided and recommended for use on high frequency doors.

**NOTE :** Accurate door preparation is essential for proper functioning of this lock. Follow template and instructions carefully.

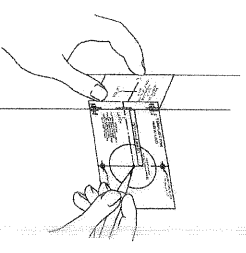
The anti-sagging mechanism of handle in cylindrical leverset has a patent pending in the U.S. and foreign countries.

### 4. Install strike

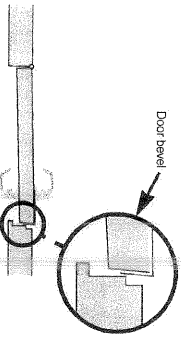


- A. Mark vertical line and heightline on jamb exactly opposite center of latch hole.
- B. Drill (2) 1" (25mm) holes, 3/16" (19mm) deep, 5/16" (8mm) above and below heightline.
- C. Use strike plate to pattern for cutout. Clean out hole and install strike.

## Door and jamb preparation



Door bevel

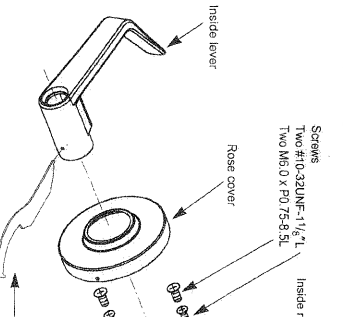


### 1. Mark door

- A. Check lock for proper backset before marking.
- NOTE :** Through-Bolts are provided and recommended for use on high frequency doors.
- B. Detach stub.
- C. Fold template at correct marking for door bevel (high or low bevel, or flat).
- D. Position template at correct height (recommended height for centerline is 38" (97mm) from floor).
- E. Mark center for 2 1/8" (54mm) hole.
- F. Also mark for (2) 5/16" (8mm) holes for through-bolt type.
- NOTE :** Do not mark (2) 5/16" holes for locks No through-bolt type.
- G. Use stud to mark center of door thickness.
- HINT :** For retrofitting existing lock holes, fold template in half to position for the mounting screws.

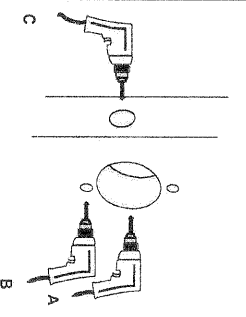
### Lock Installation

Must use #M6.0 x P0.75-8-SL. If thru bolts is not installed. Must use #10-32UNF-1 1/8" L. (gasket with convertible thru bolt) in installing convertible thru bolt.



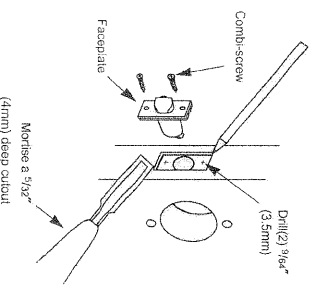
- A. Disassemble inside lever.
- B. Twist inside rose cover to remove.
- C. Disassemble inside rose assembly.

### 2. Drill holes



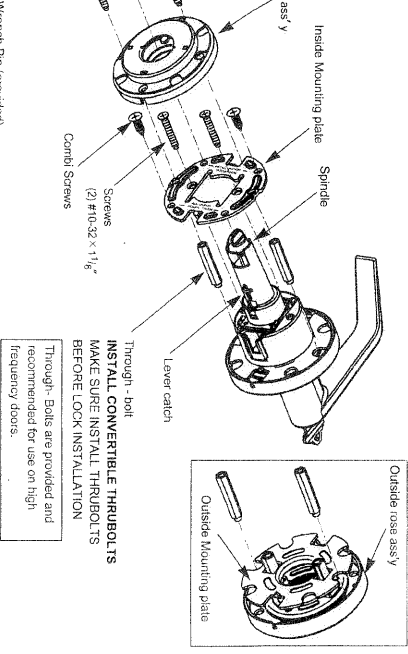
- A. Drill a 2 1/8" (54mm) hole through door (from both sides to avoid damaging door).
- B. Drill (2) 5/16" (8mm) holes for through-bolt.
- NOTE :** Do not drill the (2) 5/16" (8mm) holes for locks No through-bolt type.
- C. Drill a 1" (25mm) or 7/8" (22mm) (depending on latch housing diameter) in door edge.

### 3. Install latch



- A. Insert latch into hole. Trace around faceplate
- B. Chisel out wood until faceplate fits flat with door edge.
- C. Drill (2) 3/16" (3.5mm) holes and secure latch unit with comb-screws supplied.
- D. Fasten latch to door so that beveled side of latchball faces jamb.

### 5. Disassemble inside trim



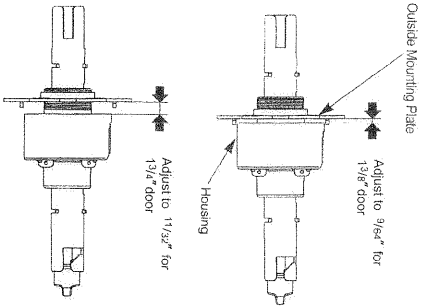
- D. Disassemble inside mounting plate.
- E. Insert the convertible thrubolt(s)(provided) into the tapped holes in the outside rose ass'y.

Through-bolt  
INSTALL CONVERTIBLE THRU BOLTS  
MAKE SURE INSTALL THRU BOLTS  
BEFORE LOCK INSTALLATION

Through-Bolts are provided and recommended for use on high frequency doors.

## 6. Adjust for door thickness

**LOCKSET IS FACTORY PRESET FOR 1 3/4" (45mm) DOORS.**  
See step 6 to center chassis in door or to change adjustment of other door thicknesses.



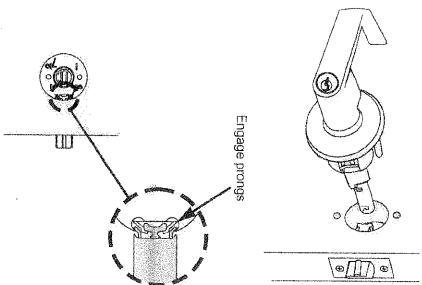
### ADJUSTMENT FOR DOOR THICKNESS

It can be adjusted for door thickness range from 1 3/8" up to 2". For adjustment of door thickness, follow step 11, then:

- Adjust outside mounting plate for proper door thickness. At final position, the screw post hole must be in line with holes in lockbody.
  - Slide outside rose ass'y with rose cover onto spindle with the wider notch at inside diameter in line with lever catch.
- The screw posts will enter the holes pre-aligned between outside mounting plate and lockbody.

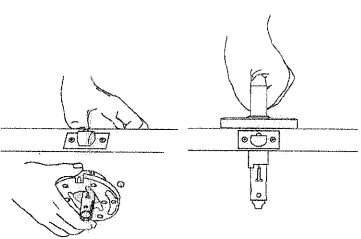
**NOTE:** See Step 11, must be done if you have to make adjustments for door thickness.

## 7. Install outside lock unit



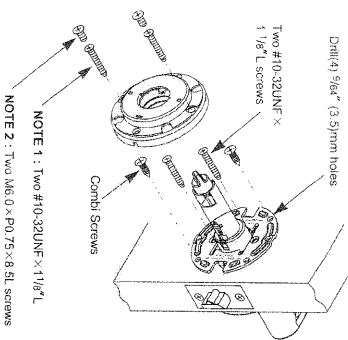
**IMPORTANT:** Place outside lock unit into position. Make sure that latch prongs engage chassis housing, and retracter engages latch bar.

## 8. Install mounting plate.



- Hold outside unit in place.
  - Put mounting plate into position on chassis.
  - Place mounting plate. Tighten it to lock body with two #10 - 32UNF x 1 1/8" L screws.
  - Drill (4) 9/16" (3.5mm) holes and secure the mounting plate with four combi-screws supplied. **(THIS MUST BE DONE TO FIRMLY ANCHOR LOCK TO DOOR-ESPECIALLY WHEN THROUGH TS ARE NOT USED)**
  - Place inside rose ass'y. Tighten it to lock body with screws supplied.
- NOTE 1:** Two #10 - 32UNF x 1 1/8" L screws can be used for outside through - bolt type only.  
**NOTE 2:** Two M6.0 x P0.75 x 8.5L screws can be used for no through - bolt type only.

### CAUTION FOR CLASSROOM FUNCTION



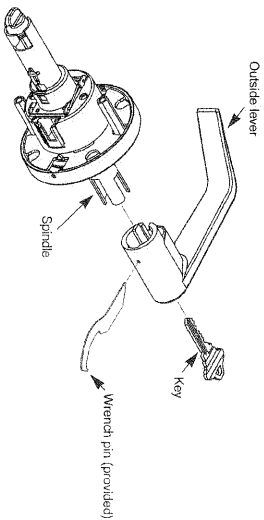
**CAUTION:** When using power screwdriver for installation, set to minimum torque setting.

**NOTE 1:** Two #10-32UNF x 1 1/8" L screws  
**NOTE 2:** Two M6.0 x P0.75 x 8.5L screws

## How to remove & reassemble outside lever

### 11. Remove outside lever

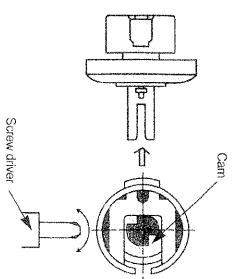
**NOTE:** Required if you re-key, the lock or adjust the door thickness. (See Step 6)



- Insert key into cylinder. Insert wrench pin(provided) into hole in lever. Turn key one - quarter turn and push pin to depress lever catch. Slide the lever from spindle.

### 12. Reassemble outside lever

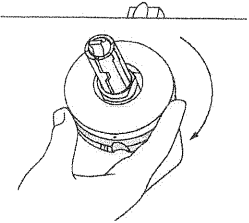
- Reverse Step 11 to reassemble levers:
- To reassemble. Put a cylinder and key in lever.
  - Push cylinder further in until it engages retracter.
  - Turn key 90° clockwise and hold a key.
  - Depress lever catch and push lever (Not key) in until it clicks then release a key.



**(1) Locking:** Turn key counter-clockwise. Return to take a key out.  
**(2) Unlocking:** Turn key clockwise. Return to take a key out.

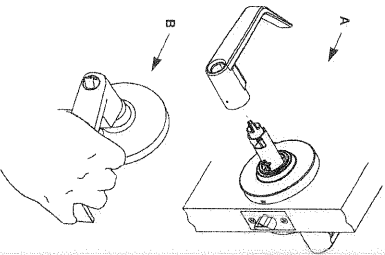
Make sure to turn cam counter clockwise with a screw driver as far as it will go before reassembling of cylinder to prevent mis-positioning of cam for classroom function.

## 9. Install inside rose assembly



- Align dimples on rose with grooves in inside rose assembly.
- Place rose against door and rotate clockwise until dimples snap into slots next to the grooves.

## 10. Install inside lever



- Slide inside lever onto spindle. Push lever completely into place. (Pull on lever to make sure that catch is fully engaged.)
- Test operation of lock to make sure you have followed instructions correctly.