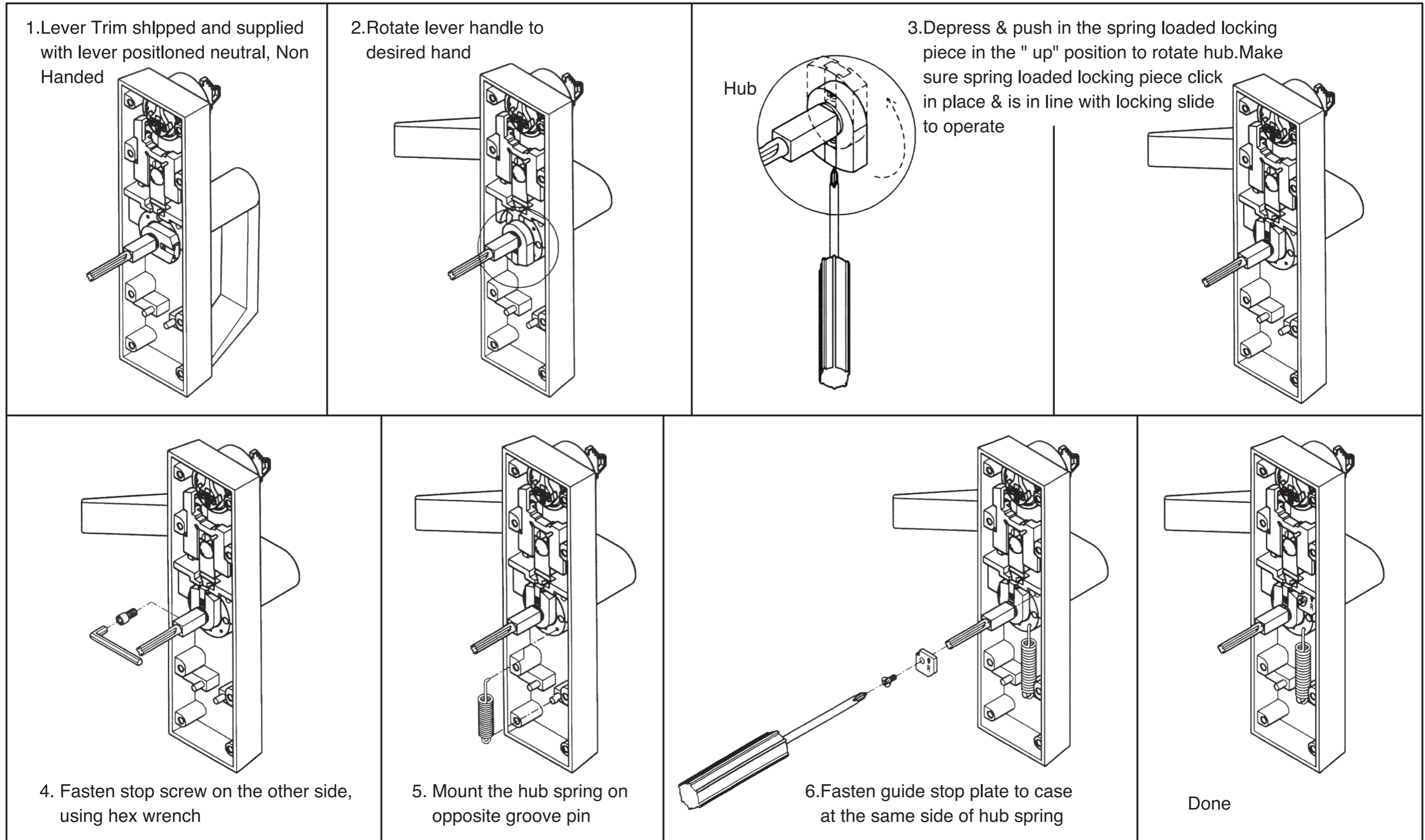


ESC Lever Trim

Method for changing hand of lever RHR



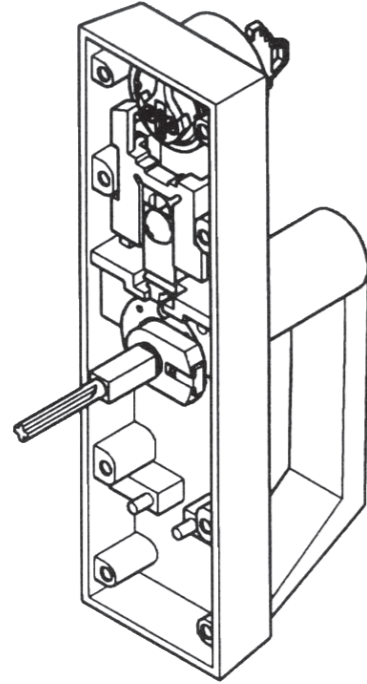
Method for replacing cyl

1. With locking slide in down position, unscrew cyl nut and remove the cyl and ring
2. Replace cyl by reversing above procedure. Make sure that cyl cam points up and correct length of ring is used

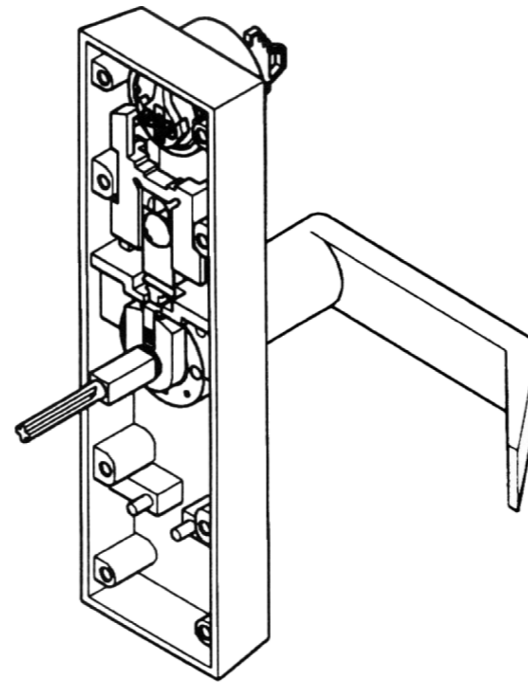
ESC Lever Trim

Method for changing hand of lever LHR

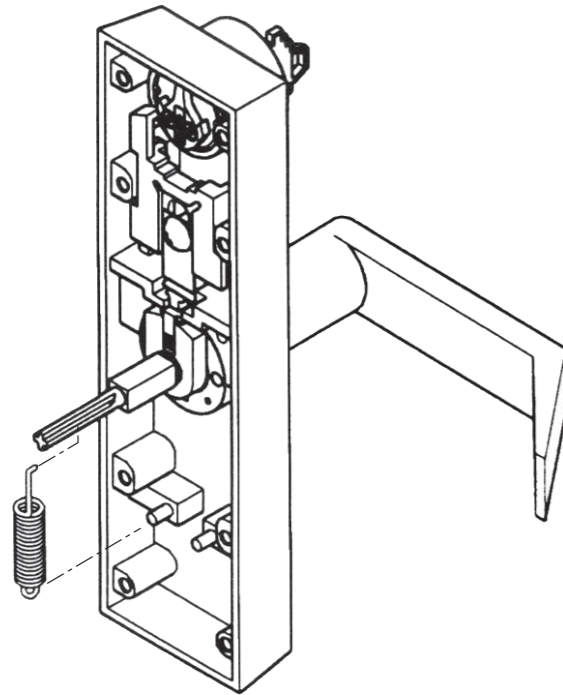
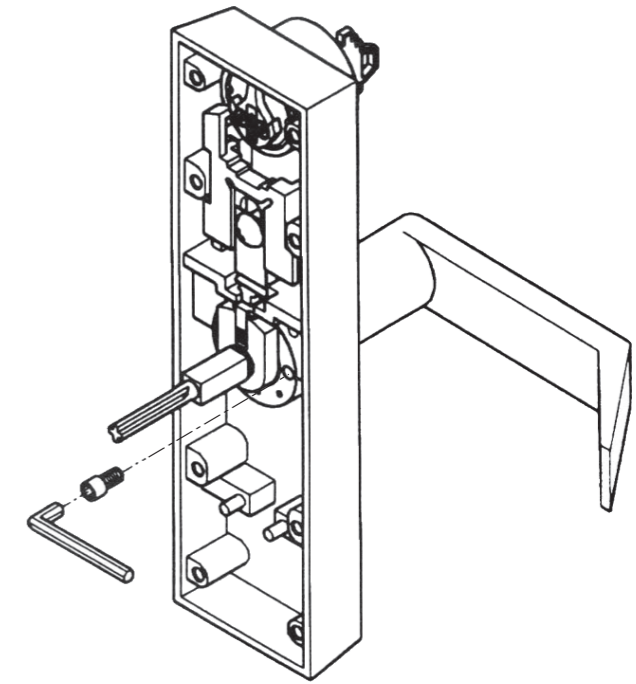
1. Lever Trim shipped and supplied with lever positioned neutral, Non Handed



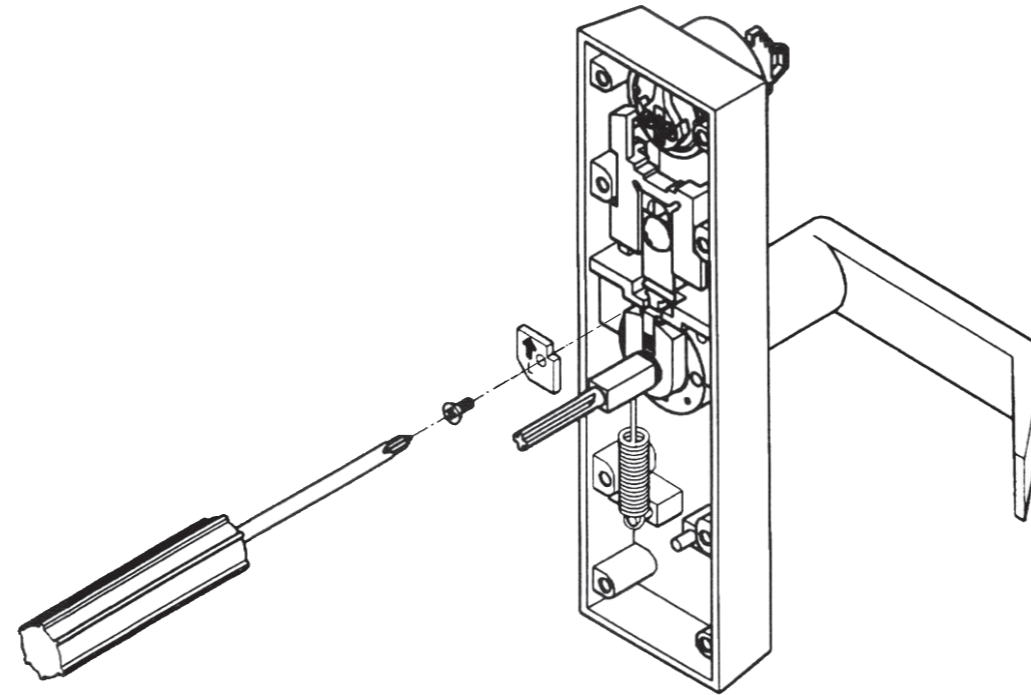
2. Rotate lever handle to desired hand. Making sure hub with Spring loaded locking piece click in place and is in line with locking slide to operate.



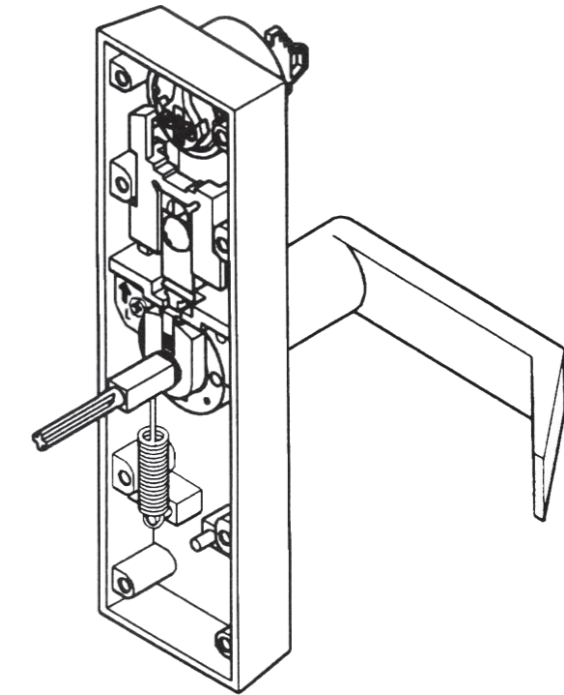
3. Fasten stop screw on the other side, using hex wrench



4. Mount the hub spring on the opposite groove pin



5. Fasten guide stop plate to case at the same side of hub spring



Done

Method for replacing cyl

1. With locking slide in down position, unscrew cyl nut and remove the cyl and ring
2. Replace cyl by reversing above procedure. Make sure that cyl cam points up and correct length of ring is used