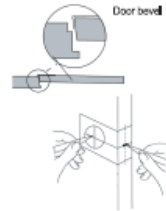


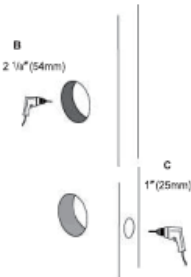
## Grade 1 Heavy Duty Deadbolt

### 1. Mark Door



- Check lock for proper backset and door thickness of the door before marking.
- Fold template at correct marking for door.
- Mark center for  $2\frac{1}{4}$ " (54mm) hole.
- Mark center for  $1"$  (25mm) diameter latch holes in door edge.

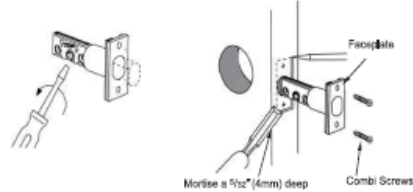
### 2. Drill holes



- Determine backset ( $2\frac{3}{4}"$  or  $2\frac{1}{2}"$ ) of the lock.
- Drill a  $2\frac{1}{4}"$  (54mm) hole through door face from both sides to avoid damaging woods.
- Drill a  $1"$  (25mm) hole in door edge.

### 3. Install Dead Bolt

- A. Bolt must be retracted. Retract deadbolt (if necessary, use screwdriver to turn cam and retract bolt).

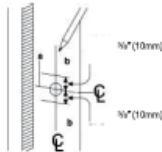


- Trace around faceplate.
- Chisel out wood for fit against door.
- Install deadbolt.
- Fasten with screws.

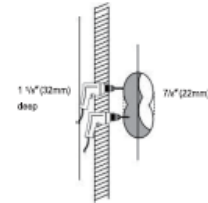
### 4. Prepare Door Jamb



Note: Close door to mark horizontal center line of strike.

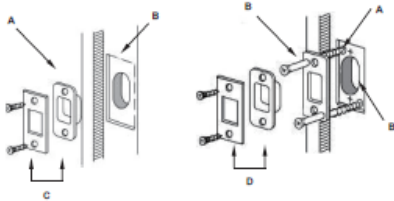


- Locate exact centerline of bolt and mark centerline on jamb.
- Mark drill points  $\frac{3}{8}"$  (10mm) above and below centerline.



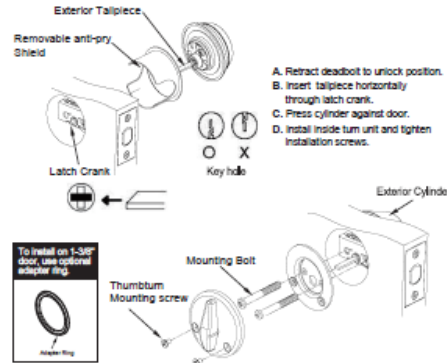
- Drill two overlapping  $\frac{3}{8}"$  (22mm) holes  $1\frac{1}{8}"$  (32mm) deep. Clean out hole for bolt.

### 5. Install Strike



- Place strike box in hole. Place strike over the strike box and use it as pattern for cutout.
- Chisel about  $\frac{1}{8}"$  (3.2mm) deep for flush fit of box and strike.
- Install strike box and strike with combi screws.
- Place reinforcer in cutout with screw holes as shown. Mark and drill  $\frac{3}{16}"$  (5mm) pilot holes.
- Chisel about  $\frac{1}{8}"$  (1.6mm) deep for flush fit of reinforcer, box and strike.
- Install Reinforcer with  $3"$  (76mm) wood screws.
- Install strike box and strike with combi screws.

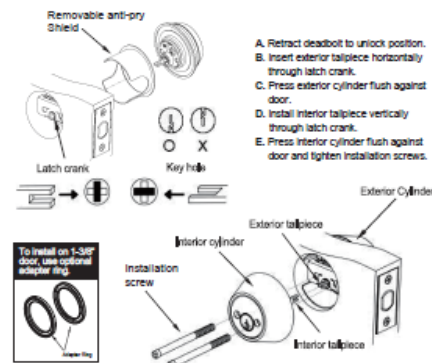
### 6. Install Single Cylinder



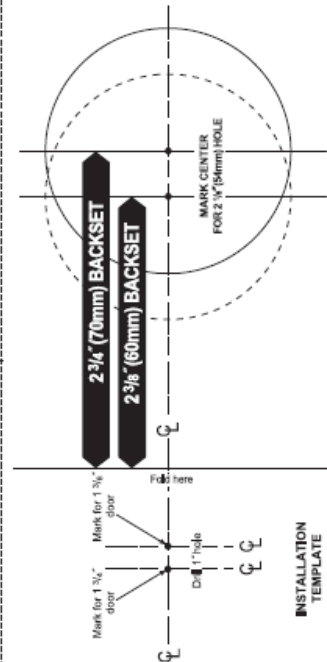
- Retract deadbolt to unlock position.
- Insert talpiece horizontally through latch crank.
- Press cylinder against door.
- Install inside turn unit and tighten installation screws.



### 7. Install Double Cylinder

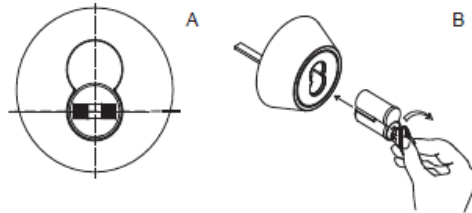


- Retract deadbolt to unlock position.
- Insert exterior talpiece horizontally through latch crank.
- Press exterior cylinder flush against door.
- Install interior talpiece vertically through latch crank.
- Press interior cylinder flush against door and tighten installation screws.



### Small Format Interchangeable Core(Optional)

- A. Align driver as shown below.
- B. Core Installation : turn control key clockwise, then insert core into deadlock.  
Turn control key back to vertical position and remove it from the core.  
Test operation with user key.

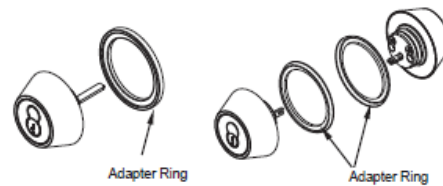


#### \* Adapter Ring (Thin Door Kit)

To install on 1-3/8" door, use optional adapter ring.

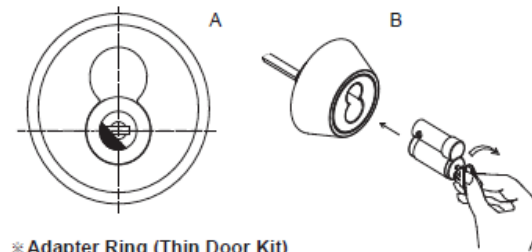
Single

Double



### Large Format Interchangeable Core(Optional)

- A. Align driver as shown below.
- B. Core Installation : turn control key clockwise, then insert core into deadlock.  
Turn control key back to vertical position and remove it from the core.  
Test operation with user key.



#### \* Adapter Ring (Thin Door Kit)

To install on 1-3/8" door, use optional adapter ring.

Single

Double

